

Baxter

Welch Allyn

PANOPTIC PLUS OPHTHALMOSCOPE
MACROVIEW PLUS OTOSCOPE



LET US CHANGE YOUR VIEW

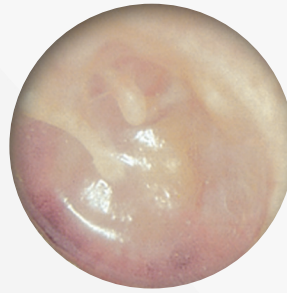
View the difference our new PanOptic Plus ophthalmoscope and **MacroView** Plus otoscope bring to the physical exam.

BIGGER, BRIGHTER VIEWS

Examining the structure of the eyes and ears is a fleeting yet critical part of the physical exam. That's why we've listened to countless providers, and have redesigned our otoscopes and ophthalmoscopes for enhanced exams.

Take a closer look with our new **Welch Allyn PanOptic Plus Ophthalmoscope** and **Welch Allyn MacroView Plus Otoscope** with bright, white LED technology.

PanOptic
Otoscope

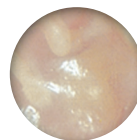


3X
LARGER
VIEWING
AREA

MACROVIEW PLUS OTOSCOPE

Use optically or quickly switch to digital image capture

- Focus-free design
- Long-lasting LED illumination
- For brighter views, pair with new **Welch Allyn LumiView Clear Single-Use Ear Specula**



Standard
Otoscope

PanOptic
Ophthalmoscope



20X
LARGER
VIEWING
AREA

PANOPTIC PLUS OPHTHALMOSCOPE

Quick Eye alignment technology helps you direct patient gaze

- Re-designed with a familiar form factor
- Long-lasting LED illumination



Standard
Ophthalmoscope

CLEARING THE PATH TO BRIGHTER VIEWS

Our new **LumiView** clear ear speculum is one of a kind, with 4X brightness through an adult speculum when compared to a black speculum. Plus, it's backwards compatible to work universally on all **Welch Allyn** otoscopes.



MORE ACCURACY WITH NEW QUICKEYE ALIGNMENT FEATURE

The **PanOptic** Plus Ophthalmoscope features two lights on the patient side. These help you direct and guide the patient's gaze, for faster, easier exams from better alignment with the optic disc.



SWITCH FROM OPTICAL TO DIGITAL

The **MacroView** Plus Otoscope and **PanOptic** plus ophthalmoscope comes digital-ready. Add-on the **Welch Allyn iExaminer SmartBracket** to save and share images for consultation.



COLLABORATIVE CARE MADE EASIER

Our **MacroView Plus** otoscope and **PanOptic plus** ophthalmoscope lets you move from an optical exam to digital in a few clicks, expanding your capabilities. Through our free **iExaminer Pro App**, save and share ear images for tracking, trending and easy consultations with specialists.

Explore our new systems with Plus models or update your device heads which are backwards compatible.



**Welch Allyn
Green Series 777**
Integrated Wall System



Welch Allyn
Diagnostic Sets



Welch Allyn
Universal Charger
and Desk Sets

Please contact a Baxter representative or authorized distributor for further information.

Baxter.com

Baxter International Inc.

Baxter, Hillrom, Green Series, iExaminer, LumiView, MacroView, SmartBracket, PanOptic, Quick Eye, Welch Allyn are trademarks of Baxter International Inc. or its subsidiaries. Always read the label and follow the directions for use.

AP-FLC124-230004 07/2023